

How Confinement-Induced Structures Alter the Contribution of Hydrodynamic and Short-Range Repulsion Forces to the Viscosity of Colloidal Suspensions

Meera Ramaswamy,^{1,*} Neil Y. C. Lin,¹ Brian D. Leahy,¹ Christopher Ness,²
Andrew M. Fiore,³ James W. Swan,³ and Itai Cohen¹

¹*Department of Physics, Cornell University, Ithaca, New York 14850, USA*

²*Department of Chemical Engineering and Biotechnology,
University of Cambridge, Philippa Fawcett Drive, Cambridge CB3 0AS, United Kingdom*

³*Department of Chemical Engineering, Massachusetts Institute of Technology,
77 Massachusetts Avenue, Cambridge, Massachusetts 02139, USA*

(Received 8 March 2017; revised manuscript received 9 June 2017; published 12 October 2017)

Confined systems ranging from the atomic to the granular are ubiquitous in nature. Experiments and simulations of such atomic and granular systems have shown a complex relationship between the microstructural arrangements under confinement, the short-ranged particle stresses, and flow fields. Understanding the same correlation between structure and rheology in the colloidal regime is important due to the significance of such suspensions in industrial applications. Moreover, colloidal suspensions exhibit a wide range of structures under confinement that could considerably modify such force balances and the resulting viscosity. Here, we use a combination of experiments and simulations to elucidate how confinement-induced structures alter the relative contributions of hydrodynamic and short-range repulsive forces to produce up to a tenfold change in the viscosity. In the experiments we use a custom-built confocal rheoscope to image the particle configurations of a colloidal suspension while simultaneously measuring its stress response. We find that as the gap decreases below 15 particle diameters, the viscosity first decreases from its bulk value, shows fluctuations with the gap, and then sharply increases for gaps below 3 particle diameters. These trends in the viscosity are shown to strongly correlate with the suspension microstructure. Further, we compare our experimental results to those from two different simulations techniques, which enables us to determine the relative contributions of hydrodynamic and short-range repulsive stresses to the suspension rheology. The first method uses the lubrication approximation to find the hydrodynamic stress and includes a short-range repulsive force between the particles while the second is a Stokesian dynamics simulation that calculates the full hydrodynamic stress in the suspension. We find that the decrease in the viscosity at moderate confinements has a significant contribution from both the hydrodynamic and short-range repulsive forces whereas the increase in viscosities at gaps less than 3 particle diameters arises primarily from short-range repulsive forces. These results provide important insights into the rheological behavior of confined suspensions and further enable us to tune the viscosity of confined suspensions by changing properties such as the gap, polydispersity, and the volume fraction.

DOI: [10.1103/PhysRevX.7.041005](https://doi.org/10.1103/PhysRevX.7.041005)

Subject Areas: Fluid Dynamics, Soft Matter

I. INTRODUCTION

Imagine driving on Delhi's narrow roads. The density of motorists is very high with vehicles ranging from large buses and trucks to motorbikes and auto rickshaws all swerving in and out of their lanes. A similar drama unfolds in the confined flows of materials ranging from granular suspensions to colloids and even atoms. Determining how polydispersity, ordering, and confinement alter these flows

in dense colloidal suspensions is particularly important since they are used extensively in industrial applications [1,2], automobile components [3], and common household products [4–7]. Moreover, such suspensions display rheological properties that may usefully be compared to atomic systems at low shear rates [8] as well as granular materials at high shear rates [9] and a microstructure that can be imaged in 3D using confocal microscopy.

The ability to image the microstructure enables us to correlate the suspension structure with its rheology. We focus on the dense suspension regime since in the dilute limit the detailed microstructure has little effect on the total shear viscosity [10]. At large volume fractions, however, many studies have shown a correlation between the microstructure and the rheology. For example, neutron scattering studies have shown that variations in the viscosity can be observed when structural changes occur in colloidal

*To whom correspondence should be addressed.
mr944@cornell.edu

Published by the American Physical Society under the terms of the Creative Commons Attribution 4.0 International license. Further distribution of this work must maintain attribution to the author(s) and the published article's title, journal citation, and DOI.

crystals [11,12]. Further, numerical and theoretical calculations in colloidal crystals have indicated that the high-frequency viscosity depends on the crystal structure and packing [13,14].

The regime of confined flows is especially interesting since suspensions often display a rich range of structures below gaps of ~ 10 particle diameters. For instance, free-energy calculations show the existence of over 20 distinct crystalline arrangements when colloidal spheres are confined in gaps ranging from 1 to 5 particle diameters [15,16]. Many of these structures have also been observed experimentally [17–21]. Under shear, these arrangements often align with the direction of flow [22,23]. The vast range of structures formed under confinement [24] suggests dense colloidal suspensions may have a rich variation in their shear viscosity.

Further motivation to study the rheology of confined colloidal suspensions comes from granular systems, where experiments and simulations demonstrate a variety of viscosity trends under confinement [25–27]. At low volume fractions, experiments show a decrease in viscosity with decreasing gap followed by an increase in the viscosity at gaps corresponding to less than a few particle diameters [25]. In contrast, larger volume fractions show no overall decrease in the viscosity. Instead, fluctuations are observed that correlate with the incommensurability of the gap with the particle diameter [27]. However, the large particle sizes in granular suspensions makes it difficult to image and, hence, correlate the microstructure and the rheology. In addition, very little is known about the origin of these changes in the rheology. Some experiments attribute the viscosity increase at extreme confinement to hydrodynamic forces [25] while other studies suggest that friction is responsible [27]. This murkiness arises in part due to the difficulty of conducting studies that combine measurements of structure and rheology with simulations in order to distinguish how different structures alter the relative contributions of hydrodynamic and short-ranged interaction forces.

Such studies in granular suspensions suggest that a similarly rich interplay will occur in colloidal systems. However, while there have been extensive investigations of the many structural transitions for colloidal suspensions under confinement, the rheological properties for systems with small gaps are poorly understood, in part due to the lack of appropriate instrumentation. In particular, cone and plate rheometers have a varying gap across the shear region, and Couette rheometers have a fixed gap, which is difficult to control with micron-scale precision. Parallel plate rheometers with circular flow can achieve small gaps but have a radially varying shear rate. Moreover, these rheometers are seldom coupled to microscopes, making it difficult to correlate the microstructure and the rheology. Early attempts to simultaneously image the particle arrangements under confined flows studied suspension transport through capillaries and showed the flow rate changes with the particle density and ordering [28,29]. In

such measurements, however, it is difficult to determine a structure-dependent viscosity since the total flow rate results from an average over a range of shear rates.

These limitations can be overcome in simulations of confined suspension flows where several studies have shown that hydrodynamic lubrication forces alone can cause an increase in the viscosity of a suspension confined between two parallel walls [30,31]. Other studies have demonstrated oscillations in viscosity and in normal forces [32] similar to the fluctuations seen in granular systems [27]. Such studies, however, are seldom compared to experiments. Without such comparisons, it is difficult to rule out contributions due to Brownian interactions and short-ranged repulsion that are thought to play a role at low and high shear rates, respectively [10,33–35].

Here, we use a custom-built parallel plate shear cell with translational flow that loads onto a confocal microscope to correlate the confinement-induced microstructure with the confined suspension rheology. Further, we compare the experimentally measured viscosities to those from the lubrication-repulsion dynamics and Stokesian dynamics simulations. This comparison enables us to determine how microstructure alters the balance of short-ranged and hydrodynamic forces to determine the measured viscosity trends.

II. APPARATUS AND METHODS

A. Experiments

To study the effect of confinement-induced structures on the suspension rheology, we use a custom-built confocal rheoscope [36]. A schematic of the device is shown in Fig. 1(a). Briefly, the shear cell has a bottom plate that is a transparent glass cover slip. The plate is attached to a piezoelectric stage that can translate along the flow x and gradient y directions. The top boundary of the shear cell is a 16-mm² silicon wafer, which is atomically flat. The wafer is glued with epoxy to a force measurement device. The shear zone is surrounded by a suspension reservoir that maintains a constant osmotic pressure boundary condition [Fig. 1(a)]. A solvent trap is used to prevent evaporation of the suspending fluid. To achieve a uniform gap, the bottom plate and the force measurement device are attached to mounting brackets that can be adjusted using three set screws. The plates can be made parallel to within $4.3 \times 10^{-3}^\circ$ with a gap h that can reach $2 \mu\text{m}$. The device enables us to simultaneously shear the suspension, measure its rheology, and image its structure over a range of gaps, as shown in Fig. 1.

The suspension consists of 2- μm diameter silica micro-pearl particles from Sekisui Chemical Company. The particles are suspended in a refractive index matching mixture of glycerol and water, that is 80-20 by mass fraction of glycerol water ($\eta_0 = 0.06 \text{ Pa s}$ at 20°C). A small amount of fluorescein dye (2 mg/ml) is added to the solvent to enable imaging. The volume fraction of silica in the suspension is 0.52, the densest suspension we could

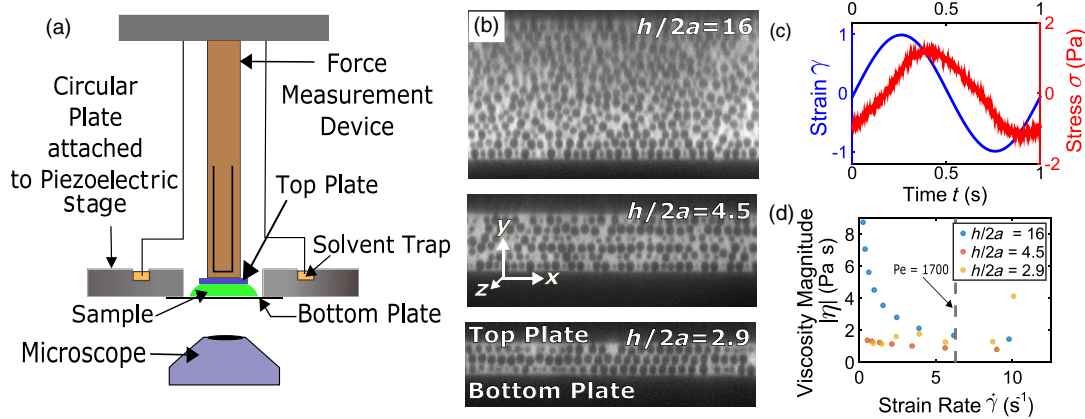


FIG. 1. The experimental apparatus and sample measurements. (a) A schematic of the shear cell, focusing on the shear zone and the force measurement device. (b) Confocal images in the shear gradient plane at three different extents of confinement. (c) The applied strain generated by the piezoelectric stage is depicted by the blue curve. A typical stress measurement that is obtained from the force measurement device is depicted by the red curve. Importantly, to extract the viscosity magnitude we use imaging to back out the effective strain amplitude. (d) The magnitude of the complex viscosity as a function of the effective strain rate for the three gaps shown in (b). The vertical gray dashed line indicates the effective strain rate that is used for the remainder of the experiments.

load and confine in our apparatus. For denser suspensions, the confining forces while loading the top plate are too large and the bottom glass plate breaks. This volume fraction corresponds to the crystal gas coexistence regime in hard spheres. The sample is sonicated and degassed to remove air bubbles prior to loading into the shear cell.

A linear oscillatory strain is applied to the sample using the piezoelectric stage attached to the bottom plate, while nanometer-scale deflections of the top plate are used to determine the force transmitted through the suspension. Examples of typical stress and strain curves are shown in Fig. 1(c). The system response is largely linear, with a measured stress that is nearly sinusoidal. From the Fourier transform of the stress response, we find that the third harmonic is smaller by at least a factor of 10 for normalized gaps greater than 3. Therefore, we report the magnitude of the complex viscosity associated with the first harmonic of the applied frequency.

Gap uniformity in this device is a major challenge since slight deviations from parallel alignment can generate unintended parasitic flows. Such effects are particularly prominent at small gaps where slight variations can lead to large changes in the applied strain. Thus, to set the gap between the plates of the shear cell, we use a painstaking imaging procedure. Briefly, we use the confocal microscope to image the entire gap at 9 equally spaced locations within the shear zone. We analyze these images and determine the derivative or change in the total intensity as a function of height y . The distance between the maximum and the minimum of this curve gives the gap between the plates to a precision of $0.1 \mu\text{m}$. Importantly, the suspension is relaxed overnight so that any stress bowing the bottom cover slip dissipates. To confirm that this method is precise and that the force measurement device works accurately at small gaps, we measure the

viscosity of a Newtonian fluid. We find that the fluid viscosity is constant over the range of gaps (2–100 μm) in which we are interested, confirming our excellent control over the shear geometry.

Wall slip presents an additional challenge in dense suspensions. Typical methods to prevent wall slip such as roughening the boundaries of the shear zone can no longer be used as they will cause complications during gap alignment and imaging. Instead, we measure the effective strain in the system by imaging the top and the bottom particle layers. Particle image velocimetry is used to find the average displacements of the particles at the boundaries. The difference between the displacement of the bottom and top layers is divided by the distance between the centers of the particles to calculate the effective strain in the sample. Importantly, in order to compare the suspension response at different gaps, we had to conduct preliminary strain sweeps at each gap to determine the *applied strain* that generates the desired *effective strain*.

For shear experiments on suspensions, the measured force response is a sum of three major contributions: the Brownian, hydrodynamic, and short-ranged repulsive stresses [33–35,37–39]. The relative magnitude of the Brownian and hydrodynamic interactions is characterized by the Peclet number for the system, $\text{Pe} = 6\pi\eta\dot{\gamma}a^3/k_B T$, where η is the viscosity of the fluid, $\dot{\gamma}$ is the shear rate, a is the radius of the particle, k_B is the Boltzmann constant, and T is the temperature. Since simulations of colloidal and granular systems have both implicated hydrodynamic lubrication forces as the origin for the rapid viscosity increase as the gap is decreased to several particle diameters [26,40], we focus on the large Pe regime where Brownian forces are negligible, the system is no longer thinning, and the viscosity depends weakly on the shear amplitude [10,41]. For the measurements we report here, we achieve a dominantly

linear stress-strain response with $Pe \approx 1700$ for all gaps by shearing at a frequency of 1 Hz and an effective strain amplitude of $\gamma_0 = 1$, as shown in Fig. 1(d). Moreover, due to the small particle size, the Reynolds number is extremely small and particle inertia can be neglected.

At these large Peclet numbers, $Pe \approx 1700$, it has been suggested that short-range interparticle repulsive forces contribute to the suspension stress [42,43]. These repulsive forces can arise from various sources ranging from actual contact to screened electrostatic repulsion between the particles. Here, we remain agnostic to the origin of these forces and use the term *short-range repulsion* to refer to them collectively.

B. Simulations

To develop an understanding of the different contributions to the stress characterizing the suspension rheology, we conduct two different simulations. The first is a lubrication-repulsion model that approximates the hydrodynamic stresses using a lubrication approximation between particle pairs and introduces a steep repulsive particle-particle interaction to prevent overlaps. The second is a modified Stokesian dynamics simulation that includes both the short-range and the long-range contribution to hydrodynamic forces. A comparison between these models and the data allows for determining (1) the fidelity of the calculations to the experimental measurements, (2) whether the lubrication approximation accurately accounts for the full hydrodynamic stresses under confinement, and (3) whether hydrodynamic interactions alone account for the experimentally measured changes in the viscosity.

1. Lubrication-repulsion dynamics

In the lubrication-repulsion model, we solve the equations of motion for noninertial, non-Brownian spheres of diameter $2a_i$ translating and rotating with velocity vectors \mathbf{v} and $\boldsymbol{\omega}$, respectively. The spheres are suspended in a density-matched fluid of viscosity η_f . The particles are subjected to forces arising due to hydrodynamics and repulsive particle-particle interactions. For efficient computation, we neglect all hydrodynamic terms other than the divergent, short-range, pairwise lubrication forces between neighboring particles [44]. Briefly, this approximation is valid because in the near-field limit the forces diverge as a/s and torques diverge as $\log a/s$, where s is the distance between the particle surfaces and a is the particle radius. However, the many-body and the far-field terms fall off as $1/r$, where r is the distance between the centers of the spheres. In the limit $s/a \ll 1$, the two-body resistance terms dominate over the many-body and far-field terms [45–49] and this approximation has shown to deliver useful quantitative results for dense suspensions where the volume fraction ϕ is $\gtrsim 0.4$.

The lubrication-repulsion model calculates the hydrodynamic force and torque on particles i due to particle j ,

with \mathbf{r}_{ij} the vector pointing from j to i and $\mathbf{n}_{ij} = \mathbf{r}_{ij}/|\mathbf{r}_{ij}|$, the force \mathbf{F}_{ij}^h , and torque $\boldsymbol{\Gamma}_{ij}^h$ as

$$\begin{aligned} \mathbf{F}_{ij}^h = & -a_{\text{sq}}6\pi\eta_f(\mathbf{v}_i - \mathbf{v}_j) \cdot \mathbf{n}_{ij}\mathbf{n}_{ij} \\ & - a_{\text{sh}}6\pi\eta_f(\mathbf{v}_i - \mathbf{v}_j) \cdot (\mathbf{I} - \mathbf{n}_{ij}\mathbf{n}_{ij}), \end{aligned} \quad (1a)$$

$$\begin{aligned} \boldsymbol{\Gamma}_{ij}^h = & -a_{\text{pu}}\pi\eta_f(2a_i)^3(\boldsymbol{\omega}_i - \boldsymbol{\omega}_j) \cdot (\mathbf{I} - \mathbf{n}_{ij}\mathbf{n}_{ij}) \\ & - a_i(\mathbf{n}_{ij} \times \mathbf{F}_{ij}^h), \end{aligned} \quad (1b)$$

for 3×3 identity tensor \mathbf{I} and squeeze a_{sq} , shear a_{sh} , and pump a_{pu} resistance terms [44], with $\beta = a_j/a_i$, as

$$\begin{aligned} a_{\text{sq}} = & \frac{2\beta^2}{(1+\beta)^2} \frac{a_i^2}{s_{\text{eff}}} + \frac{1+7\beta+\beta^2}{5(1+\beta)^3} a_i \ln\left(\frac{a_i}{s_{\text{eff}}}\right) \\ & + \frac{1+18\beta-29\beta^2+18\beta^3+\beta^4}{21(1+\beta)^4} \frac{a_i^2}{s_{\text{eff}}} \ln\left(\frac{a_i}{s_{\text{eff}}}\right), \end{aligned} \quad (2a)$$

$$\begin{aligned} a_{\text{sh}} = & 4\beta \frac{2+\beta+2\beta^2}{15(1+\beta)^3} a_i \ln\left(\frac{a_i}{s_{\text{eff}}}\right) \\ & + 4 \frac{16-45\beta+58\beta^2-45\beta^3+16\beta^4}{375(1+\beta)^4} \frac{a_i^2}{s_{\text{eff}}} \ln\left(\frac{a_i}{s_{\text{eff}}}\right), \end{aligned} \quad (2b)$$

$$\begin{aligned} a_{\text{pu}} = & \beta \frac{4+\beta}{10(1+\beta)^2} \ln\left(\frac{a_i}{s_{\text{eff}}}\right) \\ & + \frac{32-33\beta+83\beta^2+43\beta^3}{250\beta^3} \frac{a_i}{s_{\text{eff}}} \ln\left(\frac{a_i}{s_{\text{eff}}}\right). \end{aligned} \quad (2c)$$

The surface-to-surface distance s is calculated for each pairwise interaction according to $s = |\mathbf{r}_{ij}| - a_i + a_j$. We truncate the lubrication divergence and regularize the contact singularity at a typical asperity length scale $s_{\text{min}} = 0.002a_{ij}$, where $a_{ij} = [(a_i a_j)/(a_i + a_j)]$ is the weighted average particle radius. We set $s = s_{\text{min}}$ in the hydrodynamic force calculation, when $s < s_{\text{min}}$. The effective interparticle gap used in the force calculation s_{eff} is therefore given by

$$s_{\text{eff}} = \begin{cases} s & \text{for } s > s_{\text{min}} \\ s_{\text{min}} & \text{otherwise.} \end{cases} \quad (3)$$

For computational efficiency, the lubrication forces are omitted ($\mathbf{F}_{ij}^h, \boldsymbol{\Gamma}_{ij}^h = 0$) when the interparticle gap s is greater than $s_{\text{max}} = 0.1a_{ij}$. The volume fraction is sufficiently high in the present work that all particles have numerous neighbors with $s < s_{\text{max}}$, so such an omission is inconsequential to the dynamics.

The lubrication-repulsion model further applies a penalty function to minimize overlap between spheres for which $s < 0$, representing a generic particle-particle repulsive potential. For simplicity, the interaction is modeled as a linear spring [50], with a normal repulsive force given by

$$\mathbf{F}_{ij}^c = \begin{cases} k\delta\mathbf{n}_{ij} & \text{for } \delta > 0 \\ 0 & \text{otherwise,} \end{cases} \quad (4)$$

for spring stiffness k and particle overlap δ equivalent to $-s$. We find that the simulation results do not depend sensitively on the value of k or on whether the contact is Hertzian or Hookean. In particular, increasing k over 3 orders of magnitude does not quantitatively change the results.

Hydrodynamic and short-range repulsive forces are summed on each particle, and the trajectories are updated in a stepwise, deterministic manner according to a velocity-Verlet scheme. The computational model is implemented in LAMMPS [51].

To perform confinement simulations using the lubrication-repulsion model, a shear cell is constructed with upper and lower confining walls normal to y , with the separation between the walls being prescribed in advance to achieve a desired confinement. The walls measure $60a \times 60a$ and are bound by periodic boundaries in x and z . The walls are constructed from dense arrays of fixed particles with diameters one-tenth that of the suspension particles. The walls interact with suspension particles through the above repulsive forces [52,53]. The gap between the shear cell walls is initially populated with randomly located particles that are allowed to relax before shearing commences.

Taking the simulation cell as a representative control volume V , the corresponding 3×3 bulk stress tensor is calculated according to

$$\boldsymbol{\sigma} = \frac{1}{V} \left[\sum_i \sum_{j \neq i} \mathbf{r}_{ij} \mathbf{F}_{ij}^h + \sum_i \sum_{j \neq i} \mathbf{r}_{ij} \mathbf{F}_{ij}^c \right]. \quad (5)$$

The shear stress of interest is the σ_{xy} component of $\boldsymbol{\sigma}$. Samples are sheared at a strain amplitude of 1 and at a frequency that gives a characteristic Reynolds number of 0.01 producing overdamped dynamics such as those found in the experiments. For each simulation, the sample is sheared for 10 cycles and the stress from the final cycle is used to calculate the viscosity in a manner similar to the experiments. The quantities $4\rho\dot{\gamma}a^2/\eta_f$ and $2\dot{\gamma}a/\sqrt{k/2a\rho}$ remain $\ll 1$, ensuring noninertial and *nearly* hard particle rheology throughout.

2. Stokesian dynamics

Here, we use a variation of the Stokesian dynamics algorithm to compute the total hydrodynamic contribution to the viscosity of the suspension. Since current simulation techniques using Stokesian dynamics are extremely slow for systems with more than 1000 particles, we use Brownian dynamics simulations to generate particle trajectories. These configurations generated with Brownian dynamics are expected to be representative of those from standard Stokesian dynamics because the particle volume fraction is large and the particles are strongly confined, so that hydrodynamic interactions are screened [54]. From the

particle trajectories, we compute the total hydrodynamic contribution to the viscosity using the Stokesian dynamics approach.

In the Brownian dynamics simulations we start by placing 2000 particles randomly in a large simulation box (volume fraction $\phi = 0.05$). The system is periodic in all three dimensions. The system is thermally equilibrated for 100 particle diffusion times while shrinking the box in the unconfined dimensions until a volume fraction $\phi = 0.52$, which matches the experimental conditions, is reached. The particle trajectories during equilibration are generated by overdamped Brownian dynamics simulations using the HOOMD-blue software package [55,56]. After the equilibration period, the system is sheared at a strain amplitude 1.3 and frequency 1 Hz for 100 cycles, with configurations output for analysis 10 times per cycle. The linear shear rate $\dot{\gamma}$ is implemented using the Lees-Edwards boundary condition [57]. The particles are represented in the simulation as hard spheres, with the hard sphere constraint implemented by the Heyes-Melrose algorithm [58], which applies a pairwise springlike conservative force to all overlapping particle pairs. A detailed description of the hard sphere constraints and Brownian dynamics methodology we use here is described elsewhere for the case of oscillatory shear [59]. The impenetrable walls are implemented through the built-in HOOMD wall class using a purely repulsive shifted Lennard-Jones potential to represent the particle-wall interactions,

$$V(r) = \begin{cases} 4\epsilon \left[\left(\frac{\sigma}{r}\right)^{12} - \alpha \left(\frac{\sigma}{r}\right)^6 \right] - (r - r_{\text{cut}}) \frac{\partial V_{\text{LJ}}}{\partial r} \Big|_{r=r_{\text{cut}}} & r < r_{\text{cut}} \\ 0 & r \geq r_{\text{cut}}, \end{cases} \quad (6)$$

where V_{LJ} is the standard Lennard-Jones potential. For the purely repulsive wall potential, the dimensionless simulation parameters are $\alpha = 0$, $\sigma = 1$, $\epsilon = 1$, where distance σ is made dimensionless on the particle radius a , and energy ϵ is made dimensionless on the thermal energy multiplied by the Peclet number, $k_B T \text{Pe}$, $\text{Pe} = 6\pi\eta\dot{\gamma}a^3/k_B T$. This energy scaling ensures that the wall forces are strong enough to prevent overlap in the sheared system. The particle-wall interactions are truncated at $r_{\text{cut}} = a$ so that particles experience wall forces only when they overlap the wall.

The configurations along the trajectories generated with Brownian dynamics are used to compute the hydrodynamic contribution to the viscosity via Stokesian dynamics [30]. The specific quantity we report is the high-frequency shear viscosity, calculated as the mean hydrodynamic stresslet for a particular configuration. The calculated viscosity is a sum of the long-range hydrodynamic and short-range lubrication contributions to the *hydrodynamic* stress and does not include any short-range repulsive or Brownian contributions to the stress.

III. RHEOLOGY

To determine how the suspension rheology is altered by confinement, we plot the magnitude of complex viscosity η normalized by the bulk suspension viscosity η_{bulk} as a function of the normalized gap $h/2a$ at an effective strain rate amplitude of $2\pi \text{ s}^{-1}$ in Fig. 2. From the experiments, we find that under increasing confinement, changes in the viscosity from bulk can be broken up into three regimes discussed in greater detail below: (1) a decrease in the viscosity for $15 > h/2a > 6$, (2) smaller scale fluctuations in the viscosity when $6 > h/2a$, and (3) a sharp increase in the viscosity when $3 > h/2a$. We find that the lubrication-repulsion dynamics simulations capture these trends (red symbols in Fig. 2). We use our imaging capability to test the hypothesis that changes in the suspension microstructure are correlated to the observed variations in viscosity in each of these regimes. To address whether these structural changes act through short-range repulsive forces or hydrodynamics, both of which are present in the lubrication-repulsion dynamics simulations, we compare our results to the Stokesian dynamics simulations, which calculate only the hydrodynamic stress contributions and do not include additional short-ranged repulsive interactions.

A. Moderate confinement

The key change in the microstructure accompanying the decrease in the viscosity for $15 > h/2a > 6$ is the ordering of particles into layers parallel to the walls as the suspension is confined [Fig. 1(b)]. This layering can be seen more clearly by analyzing the confocal images obtained experimentally. We feature the particles using a standard particle featuring algorithm [60]. Histograms of the y coordinate of the particle centers are plotted with a bin

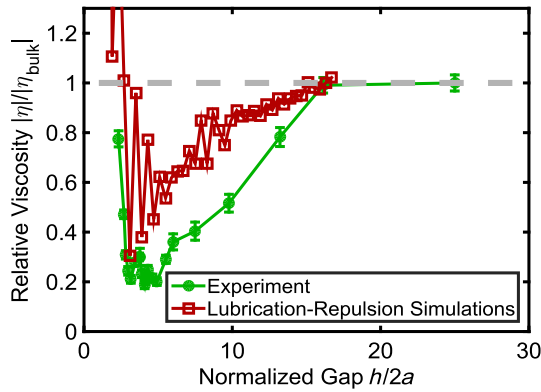


FIG. 2. Magnitude of the normalized complex viscosity versus normalized gap. A fivefold decrease in the viscosity is observed below gaps smaller than 15 particle diameters. For gaps lower than 3 particle diameters a step increase in the viscosity is observed. Very similar trends are observed in the experiment (green circles) and simulation (red squares) data. Uncertainty in the experiments corresponds to the level of background noise. The gray dashed line indicates the viscosity trend for a Newtonian fluid.

size of $0.135 \mu\text{m}$, which is equal to the z resolution of the microscope. Sample histograms for the small ($h/2a = 3$) and the large ($h/2a = 18$) gaps are shown in Figs. 3(a) and 3(b), respectively. In the unconfined system, there is a uniform distribution in the central region and strong peaks near the walls, as is expected from the images and previous literature [61–64]. As the gap decreases, the peaks in the histogram are more prominent, and the fraction of the particles in layers increases with strong layering visible at the smallest gap. The same analysis performed with the extracted particle positions from the lubrication-repulsion dynamics simulation and the results are shown in Figs. 3(c) and 3(d). The simulation results show a similar layering as the experiments. To quantify this layering, we define the order parameter:

$$\xi = 1 - \frac{1}{N} \sum_{i=0}^N \frac{f_{\min}^i}{f_{\max}^i}, \quad (7)$$

where f_{\min}^i and f_{\max}^i are the heights of the i th minima and maxima in the histogram of the y coordinates, as shown in Fig. 3(a). The sum ranges over all the N peaks in the histogram. Thus, $\xi = 1$ for a layered sample and $\xi = 0$ for a disordered or homogeneous system. We find that with decreasing gap, ξ increases [Fig. 4(a)] and the viscosity decreases [Fig. 4(b)]. A linear fit to the relative viscosity versus ξ data gives an R value of 0.8031, indicating that layering is highly correlated with the decrease in the viscosity.

This correlation between layering and viscosity can arise from different origins. For example, layering can change the hydrodynamic viscosity by increasing the fraction of particles that follow affine trajectories and making it easier

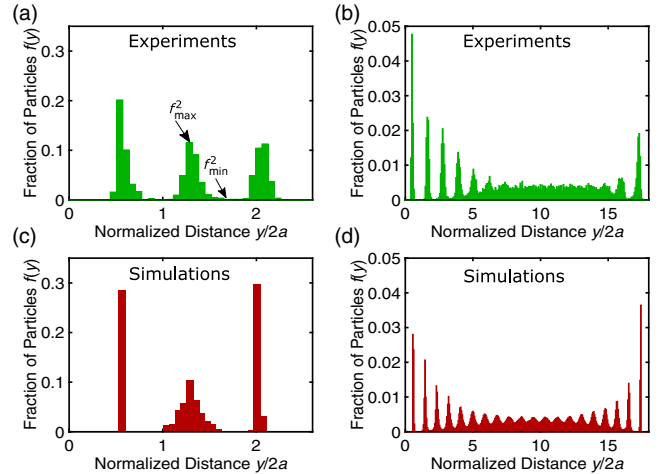


FIG. 3. Layering under confinement. Histograms of the normalized y coordinate of the particle positions from experiments [green histograms, (a),(b)] and lubrication-repulsion simulations [red histograms, (c),(d)] for small (a),(c) and large (b),(d) gaps. The bottom plate corresponds to $y = 0$. Collectively these histograms indicate strong layering with increasing confinement.

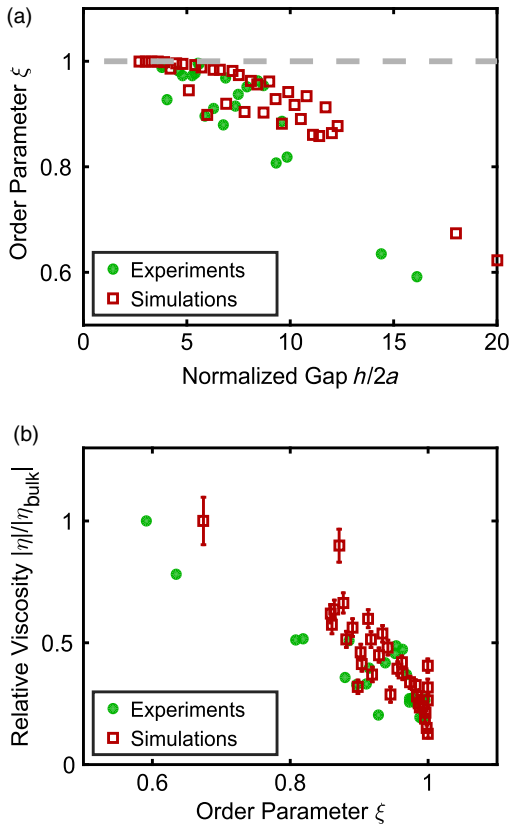


FIG. 4. Relating viscosity to the gap-dependent order parameter. (a) The order parameter as a function of gap from both experiments and the lubrication-repulsion dynamics simulation. (b) The normalized viscosity as a function of the order parameter for the experiments and the lubrication-repulsion dynamics simulation. The decrease in the viscosity is well correlated with the increase in the order parameter with an R value of 0.8031.

for particles to flow over one another. Layering, however, could also increase the minimum separation between the particles making the contribution from short-ranged repulsive forces smaller. To determine which mechanism dominates, we compare the hydrodynamic and short-range repulsion contributions in the lubrication-repulsion dynamics simulation [Fig. 5(a)]. We find a comparable decrease in the hydrodynamic and short-range repulsive stresses for this regime of moderate confinement.

To determine whether the lubrication-repulsion dynamics simulation is accurately assessing the hydrodynamic stress, we compare it to that of the Stokesian dynamics simulations by plotting the hydrodynamic viscosity versus gap [Fig. 5(b)]. We find that the hydrodynamic interactions from lubrication-repulsion dynamics show quantitative agreement with the Stokesian dynamics simulations at large gaps but show larger decreases under further confinement, even though the Stokesian dynamics simulations also show layering under confinement. This discrepancy in the stresses calculated by the two simulation techniques suggests that there might be a long-range contribution to the

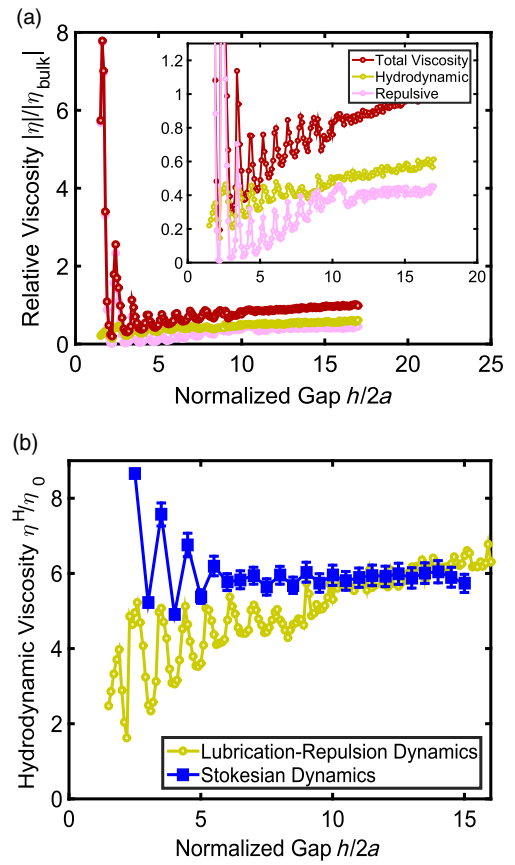


FIG. 5. Force contributions to the total stress as determined from the two simulation techniques. (a) The total (red), hydrodynamic (yellow), and short-ranged repulsion contributions (pink) to the relative viscosity of the suspension as calculated by the lubrication-repulsion dynamics simulation. The viscosities are scaled by the total bulk viscosity in all cases. The inset shows comparable decreases in the viscosities arising from short-range repulsive and hydrodynamic interactions. (b) Comparison of the hydrodynamic viscosity from the lubrication-repulsion dynamics simulation, where a lubrication approximation is used between particle pairs, and the full hydrodynamic viscosity from Stokesian dynamics. Here, the viscosity is normalized by the suspending fluid viscosity. Both simulations show similar bulk viscosities and viscosity oscillations at low gaps. The lubrication-repulsion simulation shows up to a factor of 3 reduction in viscosity for normalized gaps less than 10.

hydrodynamic stress at small gaps that is neglected by the lubrication-repulsion model. We also find a difference in the microstructure formed under confinement in the two simulation techniques. The Stokesian dynamics simulations show layering but little to no alignment in the flow direction (see Appendix A), which could also contribute to the difference in the hydrodynamic viscosity at small gaps.

B. Buckled phase

As the monodispersed sample is confined further, $3 < h/2a < 6$, we observe that the viscosity fluctuates

with gap. These oscillations have a length scale equal to the particle diameter (Figs. 2 and 5). Previous experimental observations of confined suspensions under shear show that when the gap is incommensurate with an integer number of particle layers, the system forms a buckled phase under shear [22], where the particle layers fold out of plane [Fig. 6(a)]. Our experiment and simulation data suggest that such phases may be responsible for the viscosity oscillations. To test this hypothesis, we image the sheared suspension structure over this range of gap. We find that when the gap is incommensurate with an integer number of layers, the particles form a buckled phase [22] and the relative viscosity is higher [Fig. 6(b)]. The magnitude of these oscillations is seen to increase with smaller gap.

The oscillations in the viscosity we see in the experiments can be reproduced using the lubrication-repulsion dynamics simulation [Fig. 5(a)]. In the simulations, however, these oscillations have a much larger amplitude and less well formed structure (Appendix A). Separating the short-range repulsive and hydrodynamic contributions, we find that the fluctuations in the viscosity arise from both forces, with short-range repulsion playing a larger role at smaller gaps [Fig. 5(a)]. Comparing with Stokesian dynamics simulations [Fig. 5(b)], we find good agreement with the amplitude and gap dependence of the oscillations. We do, however, find more significant decrease in the hydrodynamic contribution to the viscosity in the lubrication-repulsion model. Collectively, these data demonstrate that

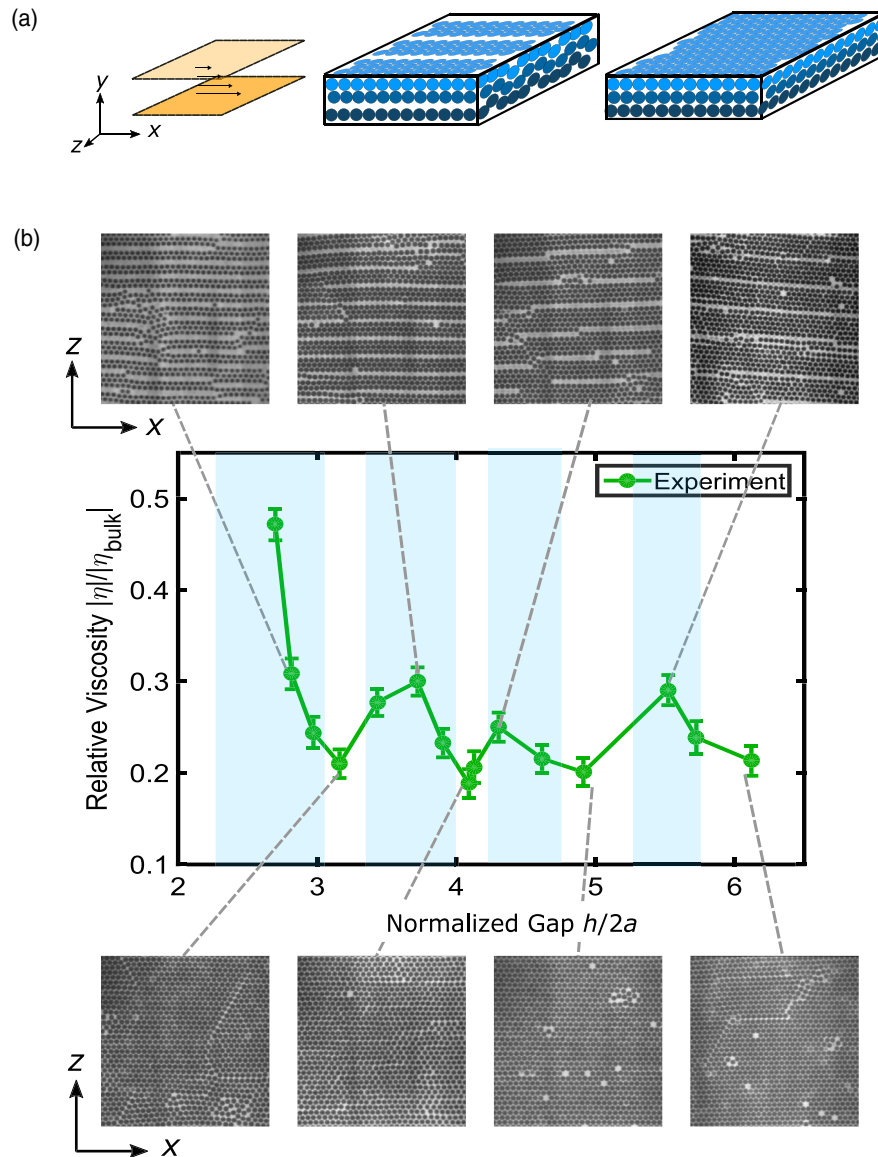


FIG. 6. Buckled phase viscosity. (a) The shear geometry and a schematic of the three-dimensional microstructure of the buckled phase and perfectly layered phase. The spheres of the same color indicate particles that move together with same velocity and displacement. (b) The magnitude of the complex viscosity as a function of the gap. The images show the x - z cross section of the microstructure at the indicated values of the gap.

confinement-induced microstructure and geometric incommensurability strongly affect the hydrodynamic and short-range repulsive forces giving rise to the suspension viscosity.

C. Extreme confinement

Finally, at extremely small gaps ($h/2a < 3$), we find that the viscosity amplitude sharply increases [Figs. 2, 5, and 6(b)]. A viscosity increase is also observed at the same normalized gap for the lubrication-repulsion dynamics simulations. However, the increase in the simulations is much larger [Fig. 5(a)], which may be due to the even smaller gaps reached in simulations. On separating the hydrodynamic and the short-range repulsive contributions to the stress, we find a small increase in the hydrodynamic stress in the lubrication-repulsion simulations. This increase is comparable to the increase seen in the Stokesian dynamics simulations. Collectively, these data indicate that the large increase in the viscosity at extreme confinement primarily arises from the short-range repulsive forces.

IV. TUNING THE SUSPENSION RHEOLOGY UNDER CONFINEMENT

The structural dependence of the hydrodynamic and short-ranged repulsive stresses indicates that volume fraction and polydispersity could be used as additional knobs for tuning the suspension response under increasing confinement. For example, decreasing the volume fraction results in a suspension that is significantly less layered under confinement. Thus, such suspensions should exhibit a smaller reduction in the viscosity with gap. To test this prediction, we compare the viscosity versus gap measurements for suspensions with volume fraction $\phi = 0.38$ and 0.52 [Fig. 7(a)]. We find that, as anticipated, the lower volume fraction suspension shows significantly less decrease in viscosity under confinement. At these volume fractions the suspension microstructure never forms full layers. As such, the viscosity oscillations arising from the buckled phases are also absent (Appendix B). We note that denser suspensions that are crystalline even in bulk would be layered at all gaps. Thus, they are expected to show little to no decrease in viscosity with moderate confinement. We would, however, expect such systems to exhibit buckled phases and the corresponding viscosity fluctuations. Finally, in all cases we expect to observe the sharp increase in viscosity under extreme confinement.

Polydispersity can also be used to inhibit layer formation. Thus, we predict that the decrease of viscosity due to confinement-induced ordering would diminish with increasing polydispersity. To test this prediction we measure the relative viscosity versus normalized gap for bidisperse suspensions with different degrees of polydispersity. The suspensions are composed of two different particles with incommensurate diameters, 2 and 1.3 μm . We control the extent to which the suspensions can layer by changing the number ratio of the small to the big particles r .

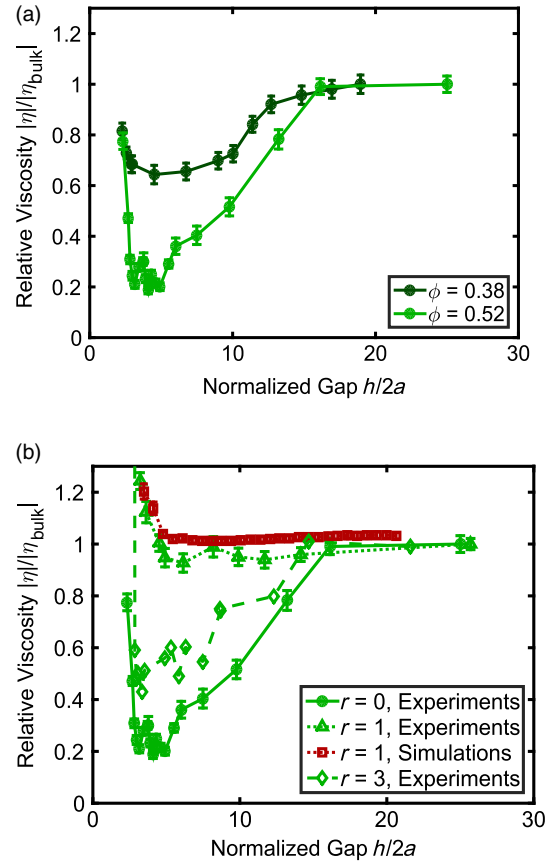


FIG. 7. Tuning the viscosity under confinement. (a) The decrease in the viscosity under confinement for two different volume fractions. (b) The viscosity of a bidisperse system at three different number ratios of small to large particles, $r = 0, 1$, and 3 . Also shown are the lubrication-repulsion simulation results for $r = 1$.

For example, using $r = 1$ we can completely suppress the layering in the systems and we observe a constant viscosity down to very small gaps [Fig. 7(b), green and red lines]. In contrast, using $r = 3$ we observe some layering in the suspension and, hence, a small but significant decrease in the viscosity is observed [Fig. 7(b), diamond symbols]. These experiments demonstrate that the suspension microstructure is a powerful tool that can be utilized to tune the confined suspension viscosity.

V. DISCUSSION

A. Viscosity fluctuations arising from buckled phase microstructure

The measured increase in the viscosity when the suspension forms a buckled phase contradicts the model put forward previously by Cohen *et al.* [22]. This prior work suggested that the amplitude of the shear stresses is proportional to the shear-dependent osmotic pressure [65] in the shear zone. Since the shear-dependent osmotic pressure must balance the constant osmotic pressure in the reservoir, it was predicted that the effective viscosity of the suspension must

also be constant for all gaps. While we find that the viscosity increase in the buckled structures observed in our experiments is moderate, indicating the osmotic pressure may set the overall scale of the viscosity, our measurements suggest that the coupling between the viscosity and the osmotic pressure is more complex.

More specifically, the complication arises from the fact that details of the suspension structure can alter the normal stresses generated by a given shear flow. For example, when the suspension forms a buckled phase, a normal stress in the gradient direction pushing a particle sitting below its neighbors will be redirected laterally through the short-ranged repulsion between the particles. Thus, the degree to which forces in different directions are coupled may vary substantially for different structures and requires further investigation.

In principle, numerical simulations that impose a buckled phase structure parametrized by the extent of buckling could be used to fully elucidate the origin for the viscosity increase. For example, such studies could be used to determine the coupling between the reservoir osmotic pressure and the shear stresses generated by different degrees of buckling. In addition, for a given structure and flow, the hydrodynamic and short-range repulsion contributions to the shear stresses could be determined. Such a study would also allow for distinguishing whether effective surface area between layers or distance between layers dominates the increase in hydrodynamic contributions in the buckled phase.

B. Increase in viscosity under extreme confinement

At gaps $h/2a < 3$, the suspension viscosity increases dramatically. The simulation data indicate that short-ranged repulsion provides the dominant contribution to this increase. Motivated by the formation of force chains in granular systems, we track the increase in the number of “bridges” that span the system between the two walls. Here, a bridge refers to an uninterrupted chain of particles whose interactions are dominated by short-ranged repulsive forces. We use the simulation data from the lubrication-repulsion dynamics simulations to plot the number of system spanning bridges for the monodispersed system versus normalized gap. We find that the number of bridges increases sharply at a normalized gap of three. These results indicate that while short-range repulsion forces contribute at all gaps, the sharp increase in the viscosity at extreme confinement arises from the increase in the bridges between the upper and lower walls (Fig. 8).

C. Comparisons to atomic and granular systems

Many of the changes in the viscosity of a colloidal suspension under confinement can be compared to those observed in atomic and granular systems. In atomic systems, for example, it has been shown that when water is confined such that the gap size is comparable to a few times that of the molecule, its viscosity increases by several

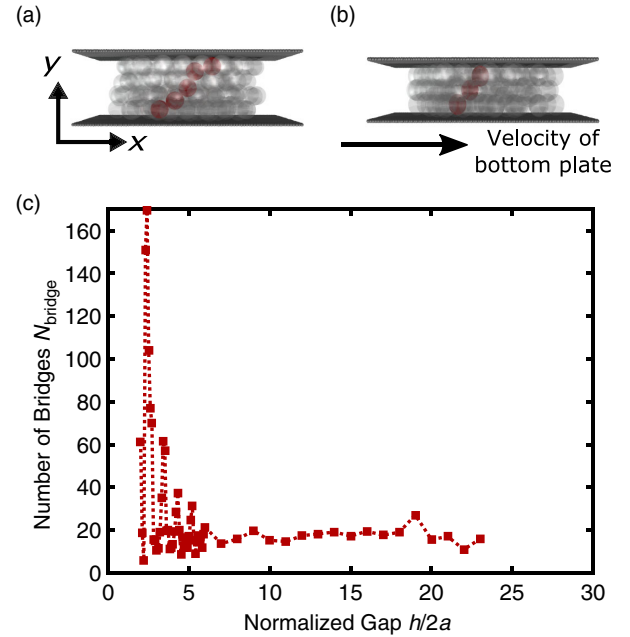


FIG. 8. Bridge formation under confinement. Panels (a) and (b) show an example of a bridge seen in the simulations at gaps of 3.5 and 2.5 particle diameters, respectively. (c) The number of system spanning bridges as a function of gap. We find a sharp increase in the number of bridges corresponding to the increased viscosity at extreme confinement.

orders of magnitude [66,67]. The similar increase seen in colloidal suspensions under extreme confinement is consistent with the idea that formation of short load-bearing bridges between the confining surfaces may be the underlying cause of the viscosity increase in atomic fluids. This mechanism also explains why the viscosity increase occurs only at very small gaps: without friction or some other mechanism that prevents lateral slipping between particles or atoms, it is difficult to support long force chains between the plates.

Simulations and experiments in atomic systems have also shown that extreme confinement can induce structural ordering that depends sensitively on the gap [68,69]. In particular, it has been shown that incommensurability of the gap with the atom size results in oscillations in the viscosity [70,71]. These viscosity oscillations closely resemble those seen in colloidal suspensions when the gap is incommensurate with an integer number of particle layers. It would be interesting to determine whether structures similar to the observed colloidal buckled phases also arise in atomic systems.

Monodispersed granular suspensions also display trends similar to colloidal systems under confinement [25,27,61]. Granular suspensions show an increase in the viscosity at gaps smaller than 3 particle diameters. While some papers suggest that this increase is due to hydrodynamic interactions between the particles and the boundaries [26], others suggest that friction may play a role in this increase in viscosity [27]. Our current results showing the larger contribution from the short-range repulsive forces suggests

that friction may be the dominant factor in the increase in viscosity in granular suspensions.

At moderate concentrations ($\phi = 0.2-0.4$), simulations show that the viscosity initially decreases when a granular suspension is confined to gaps less than 15 particle diameters before increasing when the gap is less than 3 particle diameters [26]. This decrease in the viscosity is very similar to the decrease in the viscosity seen in colloidal suspensions and could also be the result of the layering due to the presence of boundaries.

At higher volume fractions ($\phi = 0.58$), granular suspensions no longer show this decrease in the viscosity, and the viscosity remains constant until the gap is smaller than ~ 7 particle diameters. In light of our results, it may be the case that the monodisperse granular suspension has already ordered during confinement. For example, it has been shown via simulations and experiments that granular systems layer parallel to the wall under confinement [27,72]. Such ordering would rule out the decrease in viscosity due to the layering mechanism that is observed in the present study. Moreover, such ordering would still preserve the viscosity oscillations for gaps below ~ 7 particle diameters [27,61].

The results of our experiments also show similarities with simulations of confined suspensions at higher Reynolds number [72]. Those simulations show a similar decrease and fluctuations in the viscosity even at volume fractions as low as $\phi = 0.3$. They also demonstrate layering in the suspension under confinement, and show an increase in viscosity at gaps incommensurate with the particle diameter. Such results hint that inertia could lead to additional mechanisms that enhance layer formation in commensurate gaps and give rise to oscillations in the viscosity.

VI. CONCLUSIONS

Our experiments and simulations show that the structures that arise due to confinement play an essential role in setting the balance of forces that determine the viscosity of the suspension. For a monodispersed sample with high volume fraction ($\phi = 0.52$), we find that the viscosity decreases at moderate degrees of confinement because of the layering that arises due to the presence of the walls. This layering gives rise to comparable decreases in the hydrodynamic and short-ranged repulsive forces, both of which contribute significantly to the viscosity. Further, when the gap is less than 6 times the particle diameter, the formation of a buckled structure increases the viscosity for gaps that are incommensurate with particle layers. These structural variations again give rise to comparable changes in the hydrodynamic and short-ranged repulsive forces. Finally, under extreme confinement, when $h/2a < 3$, the viscosity sharply increases due to particle bridging between the plates. This increase is dominated by the short-ranged repulsion forces between the particles.

This complex relationship between the viscosity, microstructure, and confinement enables us to tune the

suspension rheology by altering the gap, volume fractions, and polydispersity of the suspension. In addition, the formation of anisotropic structures such as the buckled phase, which is aligned along the shear direction, suggests the suspension viscosity may be anisotropic. Finally, the study we present here has only explored the effect of confinement at intermediate Pe numbers. The effects of confinement at very low Pe numbers (Brownian regime) and very large Pe numbers (shear thickening regime) remain open for future investigations.

ACKNOWLEDGMENTS

The authors would like to thank the Cohen lab members and Jin Sun for helpful discussions. M. R., I. C., N. Y. C. L., and B. D. L. were supported by NSF CBET-PMP Award No. 1232666 and continued support from NSF CBET-PMP Award No. 1509308. C.N. was supported by the Maudslay-Butler Research Fellowship at Pembroke College, Cambridge. A. F. and J. W. S. were supported by MIT Energy Initiative Shell Seed Fund.

M. R., N. Y. C. L., B. D. L., and I. C. were responsible for the colloid measurements. C.N. was responsible for the lubrication-repulsion simulations. A. F. and J. W. S. were responsible for the Stokesian dynamics simulations. All authors contributed to the writing of the manuscript.

APPENDIX A: SIMULATION MICROSTRUCTURE

We show here the structures formed in the shear vorticity plane in the simulations at high volume fractions

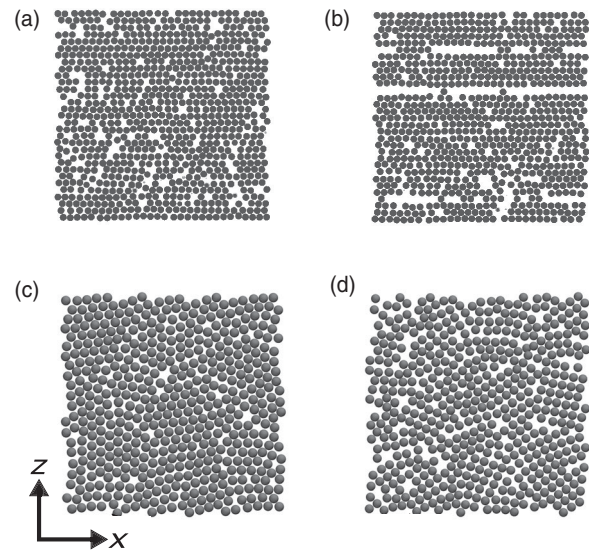


FIG. 9. The suspension microstructure in the shear vorticity plane from simulations. Panels (a) and (b) show the structure formed in the lubrication-repulsion simulations at gaps 3.5 and 3.9 particle diameters, respectively. Panels (c) and (d) show the structure formed in the Stokesian dynamics simulations at gaps 3.5 and 4 particle diameters, respectively.

($\phi = 0.52$). Figures 9(a) and 9(b) show the microstructure at gaps 3.5 and 3.9 particle diameters from the lubrication-repulsion simulations. At incommensurate gaps, we see the stripes characteristic of the buckled phase [Fig. 9(a)]. Comparing with Fig. 6(b), we see that the experimental images are more periodic, which may be the result of larger system size, Brownian motion, as well as smoother walls in the experiments. Figures 9(c) and 9(d) show the microstructure at gaps 3.5 and 4 particle diameters from the Stokesian dynamics simulations. We see layering during confinement, but in contrast to the lubrication repulsion simulations and experiments, the particles are not aligned along the flow direction. At gaps incommensurate with the particle diameter, the ordered domains indicative of layering formed at commensurate gaps are broken up. However, there is no evidence of the formation of the stripes seen in the buckled phase in the Stokesian dynamics simulations [Fig. 9(d)]. These structural differences suggest that control of boundary conditions along the vorticity direction may be

a key factor in simulating aligning dispersions as flow alignment is impeded when the simulation cell dimensions are incommensurate with an integer number of flow aligned particles in the Stokesian dynamics simulations. The difference in microstructure between the experiments and the simulations very likely contributes to the quantitative difference in the suspension viscosity [Figs. 2 and 5(b)].

APPENDIX B: LOW VOLUME FRACTION SUSPENSIONS

We discuss here in more detail the rheological and structural trends seen in suspension of low volume fraction ($\phi = 0.38$). At this volume fraction, we expect the layering to be decreased and no buckled structures to be formed. In agreement with our expectations, the results of the experiments show a smaller decrease in the viscosity [Fig. 10(a) (inset)]. Moreover, we see no measurable variations in the viscosity due to incommensurability of the gap with

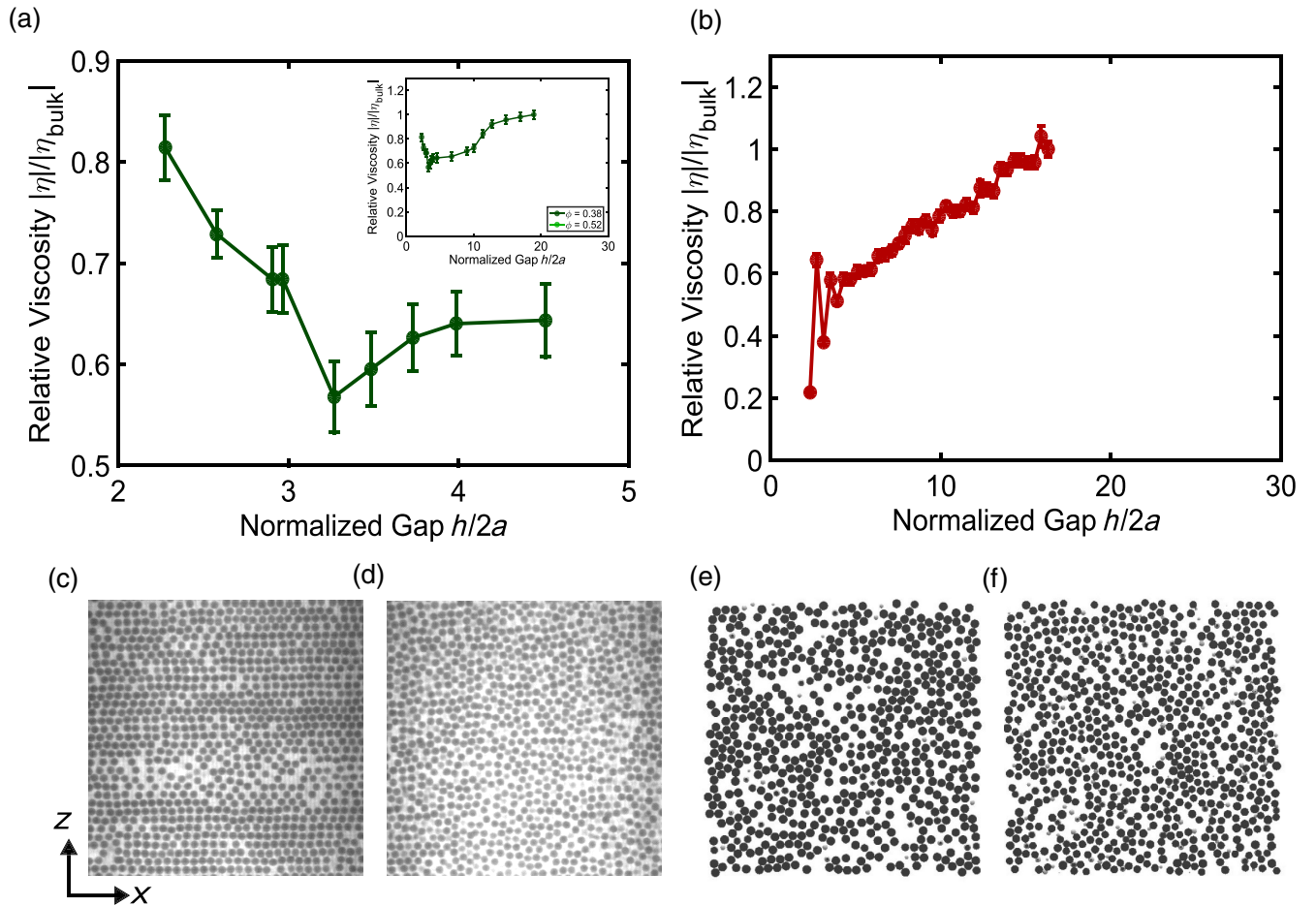


FIG. 10. Rheology and microstructure of a low volume fraction ($\phi = 0.38$) monodisperse suspension. (a) The experimentally observed variations in the viscosity between gaps 2.5–4 particle diameters. We see no measurable oscillations due to incommensurability. The inset shows the viscosity variation over the full range of gaps. (b) The viscosity of the suspension measured by the lubrication-repulsion simulations. Panels (c)–(f) show the microstructure from experiments (c),(d) and simulations (e),(f). Panels (c) and (e) are at a gap of 3.5 particle diameters and panels (d) and (f) at a gap of 3.9 particle diameters. Collectively, the structural data demonstrate the absence of layering and buckled structure in the sample.

the particle diameter [Fig. 10(a)]. The microstructure also displays less layering [Figs. 10(c) and 10(d)], and no buckled phase is formed when the gap is incommensurate with the particle diameter [Fig. 10(c)]. The lubrication-repulsion dynamics is expected to be less accurate at $\phi < 0.4$. Nevertheless, we run the simulations at $\phi = 0.38$. We observe a decrease in viscosity comparable with that seen in experiments. However, fluctuations are observed in the lubrication-repulsion simulations, even though there is no indication of the formation of the buckled phase [Fig. 10(e)].

-
- [1] L. L. Schramm, *Surfactants: Fundamentals and Applications in the Petroleum Industry* (Cambridge University Press, Cambridge, England, 2000).
- [2] L. Hudson, J. Eastoe, and P. Dowding, *Nanotechnology in Action: Overbased Nanodetergents as Lubricant Oil Additives*, *Adv. Colloid Interface Sci.* **123–126**, 425 (2006).
- [3] F. Y. Fan, W. H. Woodford, Z. Li, N. Baram, K. C. Smith, A. Helal, G. H. McKinley, W. C. Carter, and Y.-M. Chiang, *Polysulfide Flow Batteries Enabled by Percolating Nanoscale Conductor Networks*, *Nano Lett.* **14**, 2210 (2014).
- [4] E. Dickinson, G. Stainsby *et al.*, *Colloids in Food* (Applied Science Publishers, Barking, Essex, 1982).
- [5] F. Family, P. Meakin, and T. Vicsek, *Cluster Size Distribution in Chemically Controlled Cluster-Cluster Aggregation*, *J. Chem. Phys.* **83**, 4144 (1985).
- [6] A. Fall, N. Huang, F. Bertrand, G. Ovarlez, and D. Bonn, *Shear Thickening of Cornstarch Suspensions as a Reentrant Jamming Transition*, *Phys. Rev. Lett.* **100**, 018301 (2008).
- [7] C. Bower, M. Mackley, J. Smeulders, D. Barker, and J. Hayes, *Modern Aspects of Colloidal Dispersions* (Springer, New York, 1998), pp. 279–288.
- [8] W. Poon, *Colloids as Big Atoms*, *Science* **304**, 830 (2004).
- [9] L. Isa, R. Besseling, and W. C. K. Poon, *Shear Zones and Wall Slip in the Capillary Flow of Concentrated Colloidal Suspensions*, *Phys. Rev. Lett.* **98**, 198305 (2007).
- [10] X. Cheng, J. H. McCoy, J. N. Israelachvili, and I. Cohen, *Imaging the Microscopic Structure of Shear Thinning and Thickening Colloidal Suspensions*, *Science* **333**, 1276 (2011).
- [11] L. Chen, M. Chow, B. Ackerson, and C. Zukoski, *Rheological and Microstructural Transitions in Colloidal Crystals*, *Langmuir* **10**, 2817 (1994).
- [12] L. Chen, B. Ackerson, and C. Zukoski, *Rheological Consequences of Microstructural Transitions in Colloidal Crystals*, *J. Rheol.* **38**, 193 (1994).
- [13] J. M. A. Hofman, H. J. H. Clercx, and P. P. Schram, *Effective Viscosity of Dense Colloidal Crystals*, *Phys. Rev. E* **62**, 8212 (2000).
- [14] J. Hofman, H. Clercx, and P. Schram, *Hydrodynamic Interactions in Tetragonal Crystals: (II). Application to Dense Cubic and Trigononal Arrays*, *Physica (Amsterdam)* **268A**, 353 (1999).
- [15] A. Fortini and M. Dijkstra, *Phase Behaviour of Hard Spheres Confined between Parallel Hard Plates: Manipulation of Colloidal Crystal Structures by Confinement*, *J. Phys. Condens. Matter* **18**, L371 (2006).
- [16] M. R. Khadilkar and F. A. Escobedo, *Phase Behavior of Polyhedral Nanoparticles in Parallel Plate Confinement*, *Soft Matter* **12**, 1506 (2016).
- [17] P. Pieranski, L. Strzelecki, and B. Pansu, *Thin Colloidal Crystals*, *Phys. Rev. Lett.* **50**, 900 (1983).
- [18] Y. Han, Y. Shokef, A. M. Alsayed, P. Yunker, T. C. Lubensky, and A. G. Yodh, *Geometric Frustration in Buckled Colloidal Monolayers*, *Nature (London)* **456**, 898 (2008).
- [19] E. C. Oğuz, M. Marechal, F. Ramiro-Manzano, I. Rodriguez, R. Messina, F. J. Meseguer, and H. Löwen, *Packing Confined Hard Spheres Denser with Adaptive Prism Phases*, *Phys. Rev. Lett.* **109**, 218301 (2012).
- [20] E. K. Riley and C. M. Liddell, *Confinement-Controlled Self Assembly of Colloids with Simultaneous Isotropic and Anisotropic Cross-Section*, *Langmuir* **26**, 11648 (2010).
- [21] C. Avendano, C. M. L. Watson, and F. A. Escobedo, *Directed Self-Assembly of Spherical Caps via Confinement*, *Soft Matter* **9**, 9153 (2013).
- [22] I. Cohen, T. G. Mason, and D. A. Weitz, *Shear-Induced Configurations of Confined Colloidal Suspensions*, *Phys. Rev. Lett.* **93**, 046001 (2004).
- [23] X. Cheng, X. Xu, S. A. Rice, A. R. Dinner, and I. Cohen, *Assembly of Vorticity-Aligned Hard-Sphere Colloidal Strings in a Simple Shear Flow*, *Proc. Natl. Acad. Sci. U.S.A.* **109**, 63 (2012).
- [24] S. A. Rice, *Structure in Confined Colloid Suspensions*, *Chem. Phys. Lett.* **479**, 1 (2009).
- [25] P. Peyla and C. Verdier, *New Confinement Effects on the Viscosity of Suspensions*, *Europhys. Lett.* **94**, 44001 (2011).
- [26] Y. Davit and P. Peyla, *Intriguing Viscosity Effects in Confined Suspensions: A Numerical Study*, *Europhys. Lett.* **83**, 64001 (2008).
- [27] E. Brown, H. Zhang, N. A. Forman, B. W. Maynor, D. E. Betts, J. M. DeSimone, and H. M. Jaeger, *Shear Thickening in Densely Packed Suspensions of Spheres and Rods Confined to Few Layers*, *J. Rheol.* **54**, 1023 (2010).
- [28] V. Seshadri and S. Suter, *Apparent Viscosity of Coarse, Concentrated Suspensions in Tube Flow*, *Trans. Soc. Rheol.* **14**, 351 (1970).
- [29] L. Isa, R. Besseling, A. N. Morozov, and W. C. K. Poon, *Velocity Oscillations in Microfluidic Flows of Concentrated Colloidal Suspensions*, *Phys. Rev. Lett.* **102**, 058302 (2009).
- [30] J. W. Swan and J. F. Brady, *The Hydrodynamics of Confined Dispersions*, *J. Fluid Mech.* **687**, 254 (2011).
- [31] S. Bhattacharya, J. Blawdziewicz, and E. Wajnryb, *Hydrodynamic Interactions of Spherical Particles in Suspensions Confined between Two Planar Walls*, *J. Fluid Mech.* **541**, 263 (2005).
- [32] S. Gallier, E. Lemaire, L. Lobry, and F. Peters, *Effect of Confinement in Wall-Bounded Non-Colloidal Suspensions*, *J. Fluid Mech.* **799**, 100 (2016).
- [33] G. Bossis and J. F. Brady, *The Rheology of Brownian Suspensions*, *J. Chem. Phys.* **91**, 1866 (1989).
- [34] M. Wyart and M. E. Cates, *Discontinuous Shear Thickening without Inertia in Dense Non-Brownian Suspensions*, *Phys. Rev. Lett.* **112**, 098302 (2014).
- [35] R. Seto, R. Mari, J. F. Morris, and M. M. Denn, *Discontinuous Shear Thickening of Frictional Hard-Sphere Suspensions*, *Phys. Rev. Lett.* **111**, 218301 (2013).

- [36] N. Y. Lin, J. H. McCoy, X. Cheng, B. Leahy, J. N. Israelachvili, and I. Cohen, *A Multi-Axis Confocal Rheoscope for Studying Shear Flow of Structured Fluids*, *Rev. Sci. Instrum.* **85**, 033905 (2014).
- [37] N. Y. C. Lin, B. M. Guy, M. Hermes, C. Ness, J. Sun, W. C. K. Poon, and I. Cohen, *Hydrodynamic and Contact Contributions to Continuous Shear Thickening in Colloidal Suspensions*, *Phys. Rev. Lett.* **115**, 228304 (2015).
- [38] K. Sekimoto and L. Leibler, *A Mechanism for Shear Thickening of Polymer-Bearing Surfaces: Elasto-Hydrodynamic Coupling*, *Europhys. Lett.* **23**, 113 (1993).
- [39] B. J. Maranzano and N. J. Wagner, *The Effects of Interparticle Interactions and Particle Size on Reversible Shear Thickening: Hard-Sphere Colloidal Dispersions*, *J. Rheol.* **45**, 1205 (2001).
- [40] J. W. Swan and J. F. Brady, *Particle Motion between Parallel Walls: Hydrodynamics and Simulation*, *Phys. Fluids* **22**, 103301 (2010).
- [41] X. Xu, S. A. Rice, and A. R. Dinner, *Relation between Ordering and Shear Thinning in Colloidal Suspensions*, *Proc. Natl. Acad. Sci. U.S.A.* **110**, 3771 (2013).
- [42] A. Sierou and J. Brady, *Rheology and Microstructure in Concentrated Noncolloidal Suspensions*, *J. Rheol.* **46**, 1031 (2002).
- [43] J. R. Melrose and R. C. Ball, *Continuous Shear Thickening Transitions in Model Concentrated Colloid—The Role of Interparticle Forces*, *J. Rheol.* **48**, 937 (2004).
- [44] S. Kim and S. J. Karilla, *Microhydrodynamics: Principles and Selected Applications* (Butterworth-Heinemann, Boston, 1991).
- [45] R. C. Ball and J. R. Melrose, *A Simulation Technique for Many Spheres in Quasi-Static Motion under Frame-Invariant Pair Drag and Brownian Forces*, *Physica (Amsterdam)* **247A**, 444 (1997).
- [46] A. Kumar and J. J. L. Higdon, *Origins of the Anomalous Stress Behavior in Charged Colloidal Suspensions under Shear*, *Phys. Rev. E* **82**, 051401 (2010).
- [47] M. Trulsson, B. Andreotti, and P. Claudin, *Transition from the Viscous to Inertial Regime in Dense Suspensions*, *Phys. Rev. Lett.* **109**, 118305 (2012).
- [48] R. Mari, R. Seto, J. F. Morris, and M. M. Denn, *Discontinuous Shear Thickening in Brownian Suspensions By Dynamic Simulation*, *Proc. Natl. Acad. Sci. U.S.A.* **112**, 15326 (2015).
- [49] C. Ness and J. Sun, *Shear Thickening Regimes of Dense Non-Brownian Suspensions*, *Soft Matter* **12**, 914 (2016).
- [50] P. A. Cundall and O. D. L. Strack, *A Discrete Numerical Model for Granular Assemblies*, *Geotechnique* **29**, 47 (1979).
- [51] S. Plimpton, *Fast Parallel Algorithms for Short-Range Molecular Dynamics*, *J. Comput. Phys.* **117**, 1 (1995).
- [52] A. Singh and P. R. Nott, *Normal Stresses and Microstructure in Bounded Sheared Suspensions via Stokesian Dynamics Simulations*, *J. Fluid Mech.* **412**, 279 (2000).
- [53] E. Chow and J. Skolnick, *Effects of Confinement on Models of Intracellular Macromolecular Dynamics*, *Proc. Natl. Acad. Sci. U.S.A.* **112**, 14846 (2015).
- [54] N. Koumakis, M. Laurati, A. Jacob, K. Mutch, A. Abdellali, A. Schofield, S. Egelhaaf, J. Brady, and G. Petekidis, *Start-Up Shear of Concentrated Colloidal Hard Spheres: Stresses, Dynamics, and Structure*, *J. Rheol.* **60**, 603 (2016).
- [55] J. A. Anderson, C. D. Lorenz, and A. Travesset, *General Purpose Molecular Dynamics Simulations Fully Implemented on Graphics Processing Units*, *J. Comput. Phys.* **227**, 5342 (2008).
- [56] J. Glaser, T. D. Nguyen, J. A. Anderson, P. Lui, F. Spiga, J. A. Millan, D. C. Morse, and S. C. Glotzer, *Strong Scaling of General-Purpose Molecular Dynamics Simulations on GPUs*, *Comput. Phys. Commun.* **192**, 97 (2015).
- [57] A. Lees and S. Edwards, *The Computer Study of Transport Processes under Extreme Conditions*, *J. Phys. C* **5**, 1921 (1972).
- [58] D. Heyes and J. Melrose, *Brownian Dynamics Simulations of Model Hard-Sphere Suspensions*, *J. Non-Newtonian Fluid Mech.* **46**, 1 (1993).
- [59] G. Wang and J. W. Swan, *Large Amplitude Oscillatory Shear of Hard-Sphere Colloidal Dispersions: Brownian Dynamics Simulation and Fourier-Transform Rheology*, *J. Rheol.* **60**, 1041 (2016).
- [60] J. C. Crocker and D. G. Grier, *Methods of Digital Video Microscopy for Colloidal Studies*, *J. Colloid Interface Sci.* **179**, 298 (1996).
- [61] K. Yeo and M. R. Maxey, *Ordering Transition of Non-Brownian Suspensions in Confined Steady Shear Flow*, *Phys. Rev. E* **81**, 051502 (2010).
- [62] A. Komnik, J. Harting, and H. Herrmann, *Transport Phenomena and Structuring in Shear Flow of Suspensions Near Solid Walls*, *J. Stat. Mech.* (2004) P12003.
- [63] M. Zurita-Gotor, J. Bławdziewicz, and E. Wajnryb, *Layering Instability in a Confined Suspension Flow*, *Phys. Rev. Lett.* **108**, 068301 (2012).
- [64] F. Blanc, E. Lemaire, A. Meunier, and F. Peters, *Microstructure in Sheared Non-Brownian Concentrated Suspensions*, *J. Rheol.* **57**, 273 (2013).
- [65] J. Bergholtz, J. Brady, and M. Vivic, *The Non-Newtonian Rheology of Dilute Colloidal Suspensions*, *J. Fluid Mech.* **456**, 239 (2002).
- [66] A. Dhinojwala and S. Granick, *Relaxation Time of Confined Aqueous Films under Shear*, *J. Am. Chem. Soc.* **119**, 241 (1997).
- [67] J. N. Israelachvili, *Measurement of the Viscosity of Liquids in Very Thin Films*, *J. Colloid Interface Sci.* **110**, 263 (1986).
- [68] M. L. Gee, P. M. McGuiggan, J. N. Israelachvili, and A. M. Homola, *Liquid to Solidlike Transitions of Molecularly Thin Films under Shear*, *J. Chem. Phys.* **93**, 1895 (1990).
- [69] J. Klein and E. Kumacheva, *Simple Liquids Confined to Molecularly Thin Layers. I. Confinement-Induced Liquid-to-Solid Phase Transitions*, *J. Chem. Phys.* **108**, 6996 (1998).
- [70] M. Neek-Amal, F. M. Peeters, I. V. Grigorieva, and A. K. Geim, *Commensurability Effects in Viscosity of Nanoconfined Water*, *ACS Nano* **10**, 3685 (2016).
- [71] R. M. Pashley and J. N. Israelachvili, *Molecular Layering of Water in Thin Films between Mica Surfaces and Its Relation to Hydration Forces*, *J. Colloid Interface Sci.* **101**, 511 (1984).
- [72] W. Fornari, L. Brandt, P. Chaudhuri, C. U. Lopez, D. Mitra, and F. Picano, *Rheology of Confined Non-Brownian Suspensions*, *Phys. Rev. Lett.* **116**, 018301 (2016).